



2019 CAMPING TRAILER



1987 Ryan and John on Crescent Lake

2
YEAR
LIMITED
WARRANTY

JAY SPORT



12SC INTERIOR



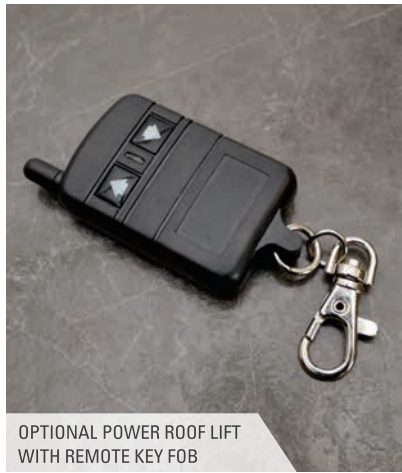
HINGED GALLEY FOR REFRIGERATOR AND STORAGE ACCESS WITH ROOF DOWN



OPTIONAL COLLAPSIBLE HANGING WARDROBE/SHELF COMBO



OPTIONAL DIAMOND PLATE STORAGE BOX WITH SIDE-ENTRY DOORS (12SC ONLY)



OPTIONAL POWER ROOF LIFT WITH REMOTE KEY FOB

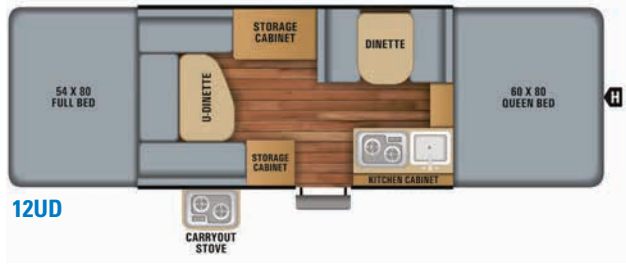
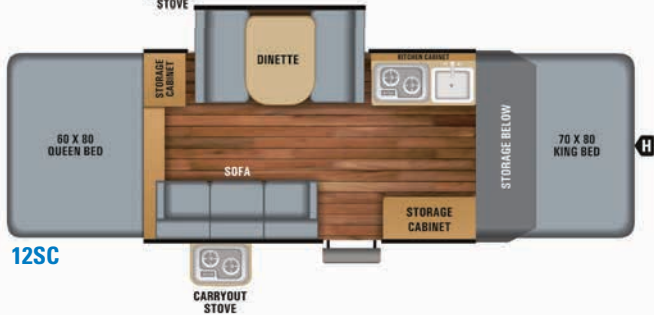
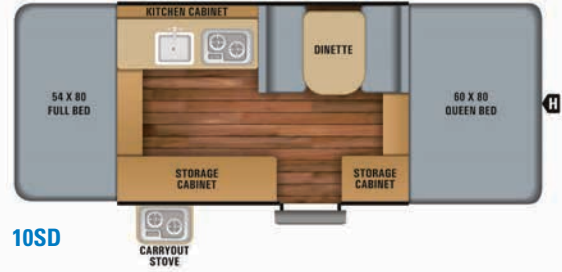


12SC BAJA EDITION



10SD WITH SCREEN ROOM

JAY SPORT FLOORPLANS



SECS

FLOORPLAN	EXTERIOR LENGTH	CAMPSITE LENGTH	EXTERIOR WIDTH	TRAVEL HEIGHT	UNLOADED VEHICLE WEIGHT	DRY HITCH WEIGHT	GROSS VEHICLE WEIGHT RATING	CARGO CARRYING CAPACITY	FRESH WATER CAPACITY	GREY WASTE WATER CAPACITY	BLACK WASTE WATER CAPACITY	SLEEP CAPACITY
8SD	11' 7"	16' 2"	7' 1"	4' 10"	1,570	215	2,250	680	28.2	N/A	N/A	5 - 6
10SD	13' 6"	19' 6"	7' 1"	4' 10"	1,720	145	2,400	680	28.2	N/A	N/A	5 - 6
12SC	18' 7"	23' 3"	7' 1"	4' 11"	2,385	285	3,375	990	28.2	N/A	5.0*	6 - 7
12US	15' 6"	21' 6"	7' 1"	4' 10"	1,875	225	2,750	875	28.2	N/A	N/A	6 - 8

*With optional bath/shower

Unloaded Vehicle Weight (UVW): Sometimes referred to as "Dry Weight," UVW means the typical weight of this trailer as built at the factory. The UVW, as used in product literature and other promotional materials, does not include cargo, fresh water, propane, options or dealer-installed accessories.

Gross Vehicle Weight Rating (GVWR): GVWR means the maximum permissible weight of the trailer, including the UVW plus personal items, all cargo, fluids, options and dealer-installed accessories. The GVWR is equal to or greater than the sum of the UVW and the CCC.

Cargo Carrying Capacity (CCC): CCC means the maximum weight of personal items, food, fresh water, propane, tools, other cargo and dealer-installed accessories that can be carried by the trailer. CCC is equal to or less than GVWR minus UVW. The addition of options will decrease the CCC.

Hitch Weight (HW): The hitch weight, as used in product literature and other promotional materials, does not include cargo, fresh water, propane gas, options or dealer-installed accessories. The addition of these types of items will either add to or subtract from the stated hitch weight.

It is important for your safety and enjoyment that your tow vehicle be adequately sized and equipped to tow and handle the GVWR of the RV you select. Review weights and rating of your tow vehicle and consult a competent advisor for questions or advice. Whether you are new to RVing or a veteran, get a feel for the performance of your tow vehicle before heading out on the roadways. When you tow an RV, you must drive differently than when you drive a single vehicle. Practice hooking up, driving, backing up and braking in a safe environment or seek out professional instruction. Jayco affixes a weight label to each RV which lists weight information for that vehicle. See specifications chart above.

STANDARDS AND OPTIONS

STANDARD EXTERIOR EQUIPMENT

- Heavy-duty, corrosion-resistant frame construction
- Integrated A-frame by Norco®
- One-piece wooden floor deck wrapped with Poly Flex™ underbelly material
- Scratch-resistant, embossed aluminum exterior finish
- Domed, seamless fiberglass roof and mildew-resistant aluminum ceiling
- Easy to use lifter system with wide lifter posts integrated into tent
- DuraTek™ water-repellent sectionalized tent with 1,050 lb. rated beds
- Removable bed braces with storage bag
- One-piece entrance door with self-storing screen door
- Retractable aluminum step(s)
- 12" E-range tires (8SD, 10SD, 12UD)
- 14" C-range tires (12SC)
- E-Z Lube® axles with leaf spring suspension
- 12V electrical system with 110V converter
- 30 amp power cord
- Prep wiring for battery
- Bumper-welded steel construction
- Leveling tongue jack
- City water hookup
- 120V GFCI protected exterior receptacle
- 20 lb. propane gas bottle

STANDARD INTERIOR EQUIPMENT

- Residential cabinetry with doors and drawers
- Ball-bearing drawer guides with 75 lb. capacity
- Acrylic sink and faucet
- Hinged galley on all models with refer access when roof closed
- Interior hookup for freestanding TV
- Appliances pre-plumbed for propane
- Stainless steel, indoor/outdoor stove with wind deflectors
- Reversible dinette cushions
- Tinted vinyl windows with fine-mesh screening
- Porta-potti storage cabinet
- Wall-to-wall BeauFlor® vinyl flooring
- Auxiliary 12V jack and privacy curtains for bunk ends
- Stereo prepped and wired

CUSTOMER VALUE PACKAGE (MANDATORY)

- 28 gallon water tank with demand water pump
- Canopy awning
- 2 cu. ft., 3 way gas/electric refrigerator (110V/12V/propane)
- A/C prep
- Bunk light with fan (2)
- Electric brakes
- Spare tire
- Stabilizer jacks (4) with sand pads
- Front and rear black diamond plating

BAJA PACKAGE (12SC, 12UD)

- 15 inch Goodyear® off-road mud tires
- 5 inches additional ground clearance
- Double entry step

OPTIONS

- Customer Value Package (MANDATORY)
- Baja Package
- Deluxe Plumbing Package: 6 gallon water heater and outside shower (12SC, 12UD) (required with bath/shower option on 12SC)
- Bath/shower with curtain in place of storage cabinet (12SC)
- Collapsible hanging wardrobe/shelf combo
- Porta-potti (N/A with bath/shower option on 12SC)
- Jackknife sofa in place of storage cabinet (10SD)
- AM/FM stereo with speakers
- 16,000 BTU furnace
- 14" x 14" powered roof vent
- Front black diamond plate storage box with side-entry doors (12SC)
- Deluxe screen room with privacy panels (N/A on 8SD)
- Exterior grill
- 4 inch heated bed mats (2)
- Aluminum rims (standard with Baja Package)
- Power roof lift with remote key fob

5-YEAR WARRANTY



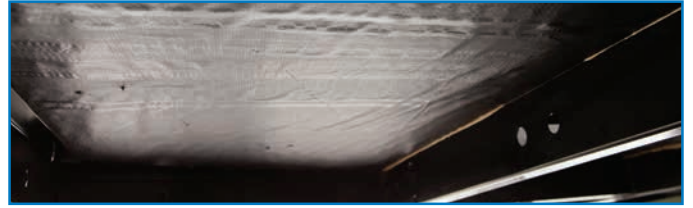
LIFTER SYSTEM - Featuring extra wide lifter posts and flexible push-rods, our lifter system is built to last and easy to use.



BED PLATFORM - Our two-piece, extruded aluminum bed frame features half-inch decking and heavy-duty supports—holding up to 1,050 lb.



TENTS - Water repellent, sectionalized DuraTek tents feature a mildew resistant backer and tinted vinyl windows with cold crack coverage to -20° F and interior UV protection.



FLOOR - Our one piece, wooden floor deck with water-resistant Poly Flex material is the strongest in the industry. Glue and screws double bond the floor to the frame for extra durability.



ROOF - A one piece, fiberglass roof features a unique dome design for better water runoff and superior leak prevention.




FRAME - Powder coated to prevent corrosion, Jayco's custom built, integrated A-frame is built for the long haul—and designed to prevent buckling and torque during towing.

2
YEAR
WARRANTY

**TRAVEL WITH
CONFIDENCE**

At Jayco, we build our RVs to handle every adventure, then back them with our industry-leading 2-year limited warranty. We, with support from our select partners, have you covered for **2 camping seasons**. That's **730 days**. You won't find a better warranty in the business, because the only strings we attach are those that deliver the ultimate in reliability. That's the Jayco difference. So go explore. For a copy of our 2-year limited warranty with complete terms and conditions, please contact your local Jayco dealer.



Jayco, Inc. | P.O. Box 460 | Middlebury, IN 46540  **RVIA**

See dealer for further information and prices. All information in this brochure and on www.jayco.com is the latest available at the time of publication approval. Jayco reserves the right to make changes and to discontinue models without notice or obligation. Photography may show optional equipment or props used for decoration purposes only. RVs built for sale in Canada may differ to conform to Canadian codes. JAYCO and the JAYCO BIRD IN FLIGHT are registered trademarks of Jayco, Inc. Printed in USA 35K 7/2018 ©2018 Jayco, Inc. 274873

Follow Jayco #Jayco50



Meet your Jayco Dealer _____

We work hard—so you can play hard. From finding the perfect Jayco for your family to providing flexible financing options and full-service support, we're here to help.